

42/142

142

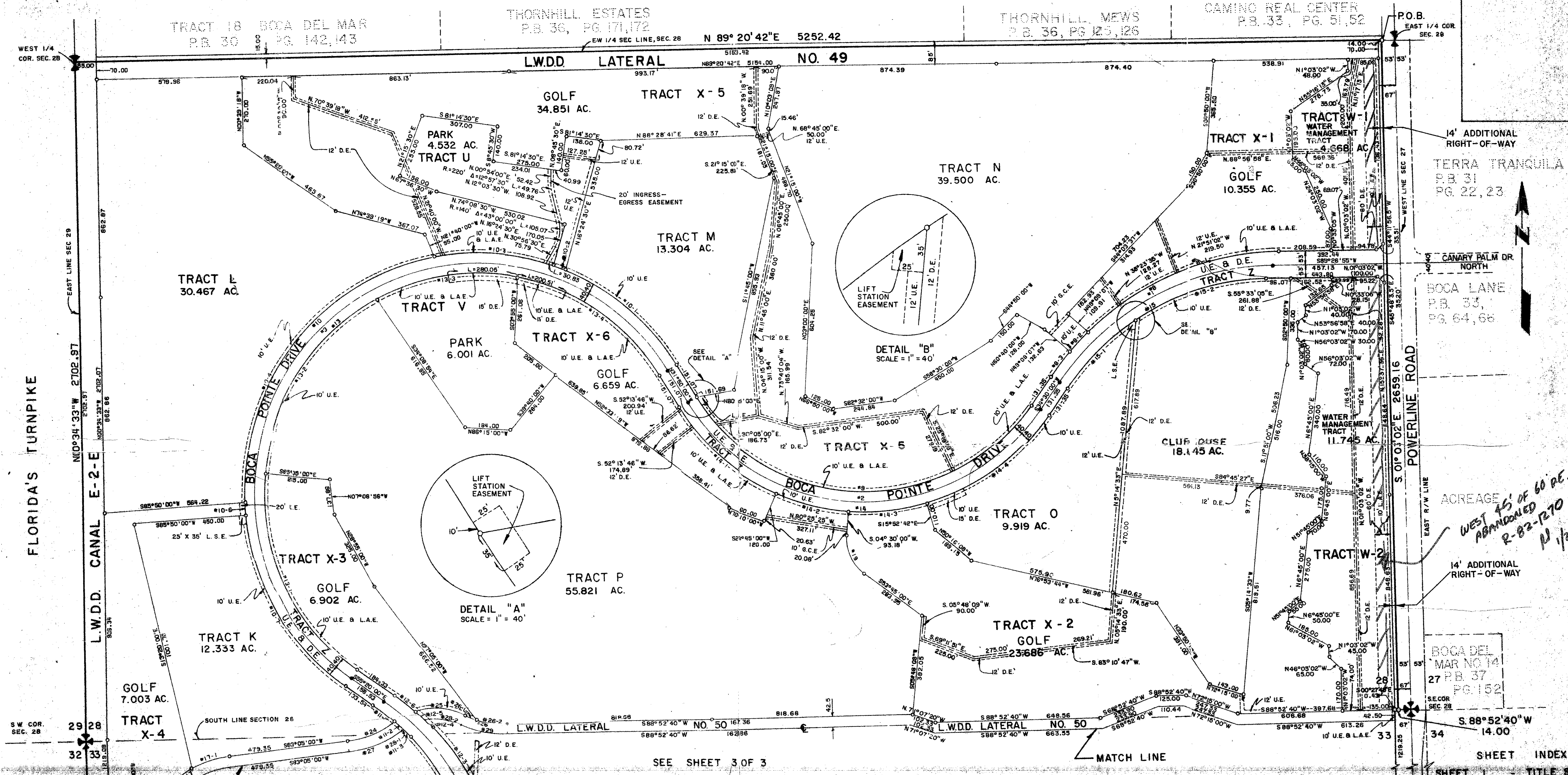
BOCA POINTE NO. 1

A PLAT OF A PORTION OF SECTIONS 28 AND 33, TOWNSHIP 47 SOUTH, RANGE 42 EAST. A PORTION OF WHICH IS A REPLAT OF BOCA DEL MAR No. 9. AS RECORDED IN PLAT BOOK 30, PAGES 218 AND 219 OF THE PUBLIC RECORDS OF PALM BEACH COUNTY, FLORIDA

JOHN A. GRANT, JR., INC.

CONSULTING ENGINEERS AND LAND SURVEYORS
OCTOBER 1980
SHEET 2 OF 3

BOCA RATON, FLORIDA
SCALE 1" = 200'



ACREAGE
WEST 1/4 OF 60 AC.
ABANDONED
R-82-1270
1/24/83

SEE SHEET 3 OF 3

NUMBER	RADIUS	ARC	DELTA	TAN	CHORD	CHORD BRNG
1	1057.70	1014.37	054°56'58"	590.00	976.94	S81°58'27.5"W
2	849.52	1085.53	113°40'00"	300.01	1426.40	N69°40'00.0"E
3	902.28	3204.63	203°30'00"	1768.75	648°28'00.0"W	
4	976.85	884.26	054°12'40"	500.00	890.17	S68°13'40.0"E
5	370.00	334.18	081°48'00"	179.46	325.84	S81°12'30.0"W
6	170.00	188.25	056°42'58"	81.75	181.48	S59°41'18.0"E
7	25.00	38.58	100°03'37"	35.82	38.51	S54°11'56.8"W
8	1128.24	1082.02	054°56'58"	595.68	1041.03	S81°58'27.5"W
8-1	850.66	043°12'38"	448.81	630.89	867°58'37.8"W	
8-2	106.16	008°29'57"	53.12	106.11	S47°52'36.0"E	
8-3	129.00	006°20'53"	62.57	129.84	S37°10'56.4"E	
9	809.62	1606.11	113°40'00"	298.80	1326.44	N69°40'00.0"E
10	942.28	3346.74	203°30'00"	1848.07	648°28'00.0"W	
10-1	588.31	038°50'00"	304.65	678.75	N48°45'00.0"E	
10-2	50.15	3702.59"	25.09	53.13	N63°11'23.5"W	
10-3	484.30	29°26'53"	247.62	478.99	N83°26'25.5"W	
10-4	1356.49	62°28'55"	826.09	1242.33	S38°35'40.5"W	
10-5	80.01	003°08'58"	25.01	80.00	S03°10'00.0"E	
10-7	916.48	043°36'47"	426.85	781.18	S80°36'36.8"E	
11	985.16	902.74	054°12'40"	500.00	976.94	S81°12'30.0"E
11-1	102.08	6°07'25"	51.09	102.04	S52°8'17.5"E	
11-2	42.87	2°02'18"	21.44	42.87	S47°52'36.0"E	
11-3	42.77	2°33'55"	21.38	42.76	S45°21'19.5"E	

NUMBER	RADIUS	ARC	DELTA	TAN	CHORD	CHORD BRNG
11-4	955.18	657.72	33°27'13"	342.50	644.50	S32°00'45.2"E
11-5	58.50	003°28'48"	28.16	58.29	S02°52'14.8"E	
12	988.54	984.78	054°12'40"	511.10	906.93	N68°13'40.0"E
12-1	200.02	811°28'38"	100.39	199.69	N02°51'39.0"E	
12-2	305.82	17°33'52"	154.12	304.63	N2°12'22.4"W	
12-3	247.65	14°12'35"	124.47	247.02	N37°15'08.0"W	
12-4	52.95	3°02'18"	26.48	52.95	N45°32'37.0"W	
12-5	49.85	2°51'58"	24.93	49.85	N48°48'38.0"W	
12-6	88.48	5°04'36"	44.27	88.45	N52°47'42.0"W	
12-7	306.00	203°30'00"	168.42	168.42	N69°40'00.0"E	
13-1	902.28	3062.00	203°30'00"	500.00	988.54	N68°13'40.0"E
13-2	866.16	057°33'13"	473.99	830.80	N33°41'36.5"E	
13-3	583.08	038°44'33"	303.17	572.02	N61°48'58.5"E	
13-4	326.84	046°09'14"	174.58	317.02	S58°18'37.0"E	
14	888.62	1754.88	113°40'00"	1361.21	1488.37	S69°40'00.0"E
14-1	534.63	034°26'58"	276.56	566.42	S48°26'58.0"E	
14-2	288.64	019°14'02"	150.74	287.24	S78°52'58.0"E	
14-3	216.41	009°26'48"	109.49	216.11	S61°17'30.0"E	
14-4	615.20	3°37'18"	320.47	602.01	N54°18'39.0"E	
15	987.16	948.78	054°56'58"	513.32	910.85	N67°58'27.5"E
16	89.00	39.00	088°20'00"	24.78	26.83	S88°48'20.5"E
17	412.50	372.50	051°48'00"	200.00	360.04	S57°12'30.0"E
17-1	186.18	02°41'34"	18.03	185.25	S14°15'00"W	
17-2	216.28	030°03'26"	110.78	213.98	S68°21'43.0"E	
18	127.50	128.50	152°42'36"	68.61	121.11	S64°09'53.5"E
19	170.00	172.83	154°15'00"	84.78	165.98	S64°31'30.0"E

NUMBER	RADIUS	ARC	DELTA	TAN	CHORD	CHORD BRNG
20	350.00	206.65	33°49'46"	106.44	203.66	N66°10'07.0"E
21	250.00	213.63	48°57'37"	113.83	207.19	S85°57'44.3"E
22	350.00	181.06	28°38'24"	92.60	179.05	S75°18'08.0"E
23	391.50	232.75	33°38'56"	119.31	229.34	N65°00'42.0"E
24	201.50	4.35	12°02'	2.17	4.35	N48°42'25.0"E
25	201.50	183.56	42°24'08"	80.48	150.03	S82°41'00.5"E
26	391.50	203.00	28°38'24"	103.85	200.79	S78°18'08.0"E
26-1	350.00	47.19	7°43'31"	23.63	47.16	S65°20'41.5"E
26-2	350.00	193.87	21°54'53"	67.76	183.04	S61°09'53.5"E
27	181.16	332.08	22°12'34"	193.76	360.00	N46°56'17.0"E
28	981.16	364.07	32°44'21"	289.97	354.48	N73°04'44.5"E

NOTE: Bearings shown hereon are based on a bearing of S. 89° 50' 07" W. along the South right-of-way line of Boca Del Mar No. 6 as shown on the record plat of Boca Del Mar No. 6 as recorded in Plat Book 30, Pages 142 and 143 of the public records of Palm Beach County, Florida.

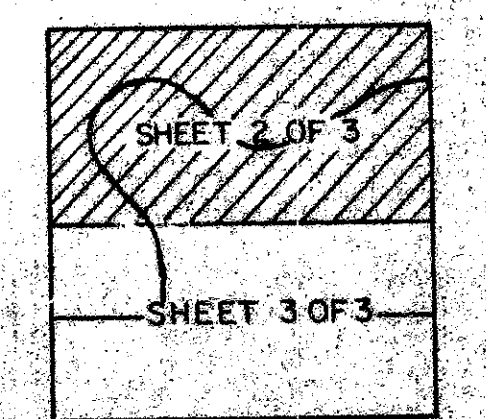
NOTE: No buildings, trees, shrubs will be placed on easements.

For Tabulation of Areas and Land Use, see Sheet 3 of 3.

All Tracts (J, K, L, M, N, O, R, and Q) must be replatted prior to development.

- P.R.M. Indicates Permanent Reference Monument.
- P.C.P. Indicates Permanent Control Point.
- U.E. Indicates Utility Easement.
- - - D.E. Indicates Drainage Easement.
- - - L.A.E. Indicates Limited Access Easement.
- - - L.S.E. Indicates Lift Station Easement.
- - - G.C.E. Indicates Golf Cart Easement.

SHEET INDEX
SHEET 1 - TITLE SHEET
SHEET 2, 3 - DETAIL SHEETS



Boca Pointe #1

This instrument was prepared by:
John A. Grant, Jr., John A. Grant, Jr., Inc.
3333 North Federal Highway, Boca Raton, Florida.

0211-303 42/142